

THE ROV

SUBATLANTIC COMANCHE LIGHT WORK CLASS ROV SYSTEM

ASTRID is Amundsen Science's remotely operated vehicle (ROV). Available from the research icebreaker CCGS *Amundsen*, it is equipped to support multisectoral Canadian and international marine research and to assist in ground-breaking subsea exploration.



MOBILE ROV SYSTEM

Flexible Multi-Vessel Integration

Ongoing support of Canadian and international science in providing a flexible ROV system that can be mobilized and deployed on a number of vessels to assist with desired scientific missions.

30Kg SCIENTIFIC PAYLOAD

Facilitating a large variety of deep-sea scientific activities, Amundsen Science has upgraded their payload support system to allow for the integration of instrumentation of your choosing with negligible limitations.

MULTIDISCIPLINARY SUPPORT TEAM

A well rounded team of professional technicians ready to support your subsea research.



CONTACT US

REACH OUT TO LEARN MORE ABOUT OUR
SUBSEA ASSETS AND ABILITY TO ASSIST
YOUR SCIENCE PROJECTS.



+1 418 656-2340



INFO@AS.ULVAL.CA

ASTRID

AMUNDSEN SCIENCE TECHNOLOGY FOR
REMOTE, INNOVATION AND DISCOVERIES

AMUNDSEN
SCIENCE 

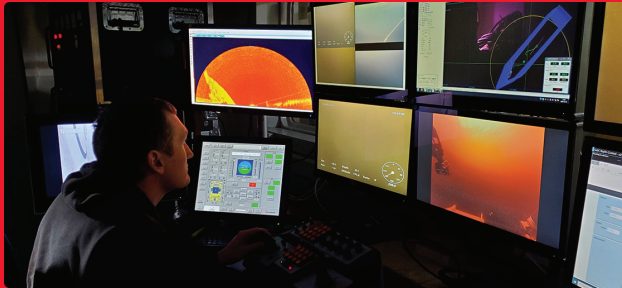


250+ HOURS

OF OCEAN EXPLORATION & SCIENTIFIC SUPPORT

CURRENT CONFIGURATIONS:
OPERATIONAL DEPTH OF 1500M+

250+ BIOLOGICAL SAMPLES
COLLECTED SINCE 2021



ROV Technical
Support & Piloting



Float System
Tether Management



Deployable to
1500m



Over the Side
Launch and Recovery

ASTRID SPECIFICATIONS

Size: 252cm x 172cm

Weight: 1500Kg

Launch & Recovery: Free flying over the side

Two container system: Work & Pilot Container

7 FUNCTION MANIPULATORS

The Orion 7P & 7R (not shown) Manipulators can retrieve scientific sample with ease and elegance, providing the ability to handle underwater assets with high accuracy, maneuverability, precision, and strength.



HD SCIENCE SPECIFIC CAMERAS

HD-SDI Camera - Insite Pacific Mini Zeus MK III
SubC 1 Cam alpha HD
Rayfin MK2 Benthic 4k
Digital Video Recording Redundancy, 2x all Video Sources



VERSATILE ROV SKID

12 Cores Sampling Rack
2 Sample Boxes with up to 32 Separate Compartments

REAL TIME SCIENTIFIC LOGGING SYSTEM

Logging system allows the scientific party to actively document and identify areas of interest in real time to the expedition deliverables.

SENSORS

CTD - AML-6 CTD
Teledyn TOGS5 - Heading, Pitch & Roll
PS-20 Depth sensor
Doppler velocity logger - Teledyne Tasman
USBL - Kongsberg Cnode

ABOUT AMUNDSEN SCIENCE

Amundsen Science is responsible for the management of the scientific mandate of the research icebreaker CCGS Amundsen. We facilitate research projects beyond the Arctic circle for scientists by providing a state-of-the-art research icebreaker and a pool of cutting-edge scientific



BLUEROV2



Also within Amundsen Science's arsenal of submersible vehicles is the BlueROV2. This ROV is a 300m capable observation class ROV which can provide:

Quick Deployment

HD Videos

Sampling

Expansion for Client Integrated Sensors

This ROV can be available for regional scientific exploration. Please contact us for details.

✉ info@as.ulaval.ca